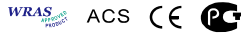


BS 5163 Flanged Resilient NRS Gate Valve (Z45X), PN10/16

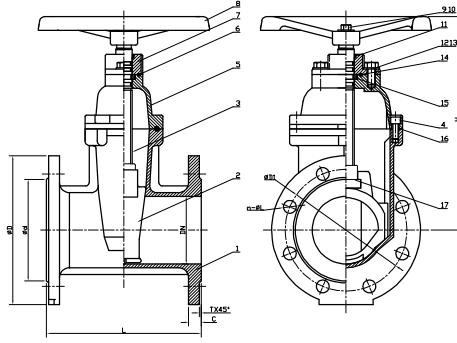


NSF/ANSI 61 NSF/ANSI 372

Z45X



- Connection Ends: Flange to BS EN 1092-2:1997
- Working Pressure: PN10/16
- Temperature Range: 0°C- 100°C
- Coating: Fusion Bonded Epoxy Coating in accordance with ANSI/AWWA C550



MATERIAL SPECIFICATION

Part No.	Part	Standard Specification	Options
1	Valve Body	EN-GJS-450-10	
2	Resilient Wedge Disc	EN-GJS-450-10+EPDM	
3	Stem	Stainless Steel	SS304, SS316, SS420, SS431
4	Bolt	Carbon Steel Zinc Plated	SS304, SS316,
5	Bonnet	EN-GJS-450-10	
6	O-Ring	NBR	EPDM
7	Gland	EN-GJS-450-10	
8	Handwheel	EN-GJS-450-10	Pressed Steel
9	Bolt	Carbon Steel Zinc Plated	SS304, SS316,
10	Flat Washer	Carbon Steel Zinc Plated	SS304, SS316,
11	Ring Wiper	NBR	EPDM
12	Bolt	Carbon Steel Zinc Plated	SS304, SS316,
13	Flat Washer	Carbon Steel Zinc Plated	SS304, SS316,
14	O-Ring	NBR	EPDM
15	Thrust Washer	Brass HPb59-1(Type A) Not Available (Type B)	
16	Bonnet Gasket	EPDM	NBR
17	Wedge Nut	Brass HPb59-1	Bronze ZQSn5-5-5

Note: For special material request other than standard specification, please indicate clearly on the inquiry or order list.

DN		PN	Dimensions(mm)								
Inch	mm		L	H		D	D1	d	C	T	n-φ L
				TypeA	TypeB						
2"	50	10/16	178	218	254	165	125	99	19	3	4-φ19
2.5"	65	10/16	190	232	275	185	145	118	19	3	4-φ19
3"	80	10/16	203	281	301	200	160	132	19	3	8-φ19
4"	100	10/16	229	316	355	220	180	156	19	3	8-φ19
5"	125	10/16	254	393	393	250	210	184	19	3	8-φ19
6"	150	10/16	267	420	448	285	240	211	19	3	8-φ23
8"	200	10	292	490	548	340	295	266	20	3	8-φ23
		16									12-φ23
10"	250	10	330	626	626	405	350	319	22	3	12-φ23
		16					355				12-φ28
12"	300	10	356	722	722	460	400	370	24,5	4	12-φ23
		16					410				12-φ28
14"	350	10	381	800	800	520	460	429	26,5	4	16-φ23
		16					470				16-φ28
16"	400	10	406	870	870	580	515	480	28	4	16-φ28
		16					525				16-φ31
18"	450	10	432	1108	1108	640	565	530	30	4	20-φ28
		16					585	548			20-φ31
20"	500	10	457	1130	1130	715	620	582	31,5	4	20-φ28
		16					650	609			20-φ34
24"	600	10	508	1311	1311	840	725	682	36	5	20-φ31
		16					770	720			20-φ37
28"	700	10	610	1311	1311	895	840	794	32,5	5	24-φ31
32"	800	10	660	1750	1750	1015	950	901	35	5	24-φ34



This certifies that

JINAN MEIDE CASTING CO. LTD.

has had the undermentioned product examined, tested and found, when correctly installed, to comply with the requirements of the United Kingdom Water Supply (Water Fittings) Regulations and Scottish Water Byelaws.

XZ41X & Z45X RANGE OF GATE VALVES (DN50-300)

The certificate by itself is not evidence of a valid WRAS Approval. Confirmation of the current status of an approval must be obtained from the WRAS Directory (www.wras.co.uk/directory)

The product so mentioned will be valid until the end of:

September 2023

1809330

Certificate No.

A handwritten signature in black ink that reads 'J. Furnival'.

Secretary

A handwritten signature in black ink consisting of several vertical strokes followed by a horizontal line.

Chairman, Product Assessment Group



Certificate of Quality System Approval

This is to certify that the product listed below conforms to the requirements of the

Pressure Equipment Directive 2014/68/EU

Annex III Module H

Certificate Number	HPiVS-iP1001-123-Q-07-00	Date of Expiry	04-Nov-2024
Date of Issue	22-Dec-2022	Surveillance due:	04-Nov-2022
Manufacturer	Jinan Meide Casting Co., Ltd No.1 Meide Street, Rose Town, Pingyin County, Jinan City, Shandong Province, China		

Description of Pressure Equipment	Gate, check, butterfly, hydraulic control, air bleeding, bottom, balance, globe and hydrant valves, flexible rubber joints, water flow indicators and strainers as per attached schedule
--	--

Equipment Identification	CE plate on each Category I, II and III item
---------------------------------	--

Type of material	steels
-------------------------	--------

Other Certification	ISO 9001:2015 Quality Management System Certificate no. CN034460 issued by Bureau Veritas
----------------------------	---

Standards Applied	See certificate schedule
--------------------------	--------------------------

Report Reference	HPiVS-iP1001-123-7
-------------------------	--------------------

This Certificate is valid in any European Economic Area Member State.

This Report has been issued by HPi Verification Services (Ireland) Ltd. which is a body notified to the European Commission according to the provisions of the Pressure Equipment Directive (Notified Body number 2810).

This Report is issued following the assessment of the documentation and implementation of the Quality System in accordance with the provisions of the quoted Conformity Assessment Module of the above directive. The CE Mark may be affixed to the Pressure Equipment within the scope of approval as described above once the EU 'declaration of conformity' has been signed by the responsible person. The number '2810', being HPi Verification Services (Ireland) Ltd. Notified Body number should also be placed on the equipment dataplate.

Check this certificate is genuine



Managing Director

Technical Manager



EU Notified Body No. 2810
Company registered in Ireland #577786

© HPi Verification Services (Ireland) Ltd. 2021

Tel +353 (0)1 8017008

Email enquiries@hpivs.ie
www.hpivs.ie

HPi Verification Services (Ireland) Ltd.
Clonross
Dunshaughlin, Co.Meath
A85 XN59, Ireland



Schedule To Certificate No HPiVS-iP1001-123-Q-07-00

Product	DN (mm)	PN (bar)	Design Standard	Temperature Range (°C)
Gate Valve	25-2000	6,10, 16, 25, 35,40	BS5163, EN1074, DIN EN1171, AWWA C515,	0-120
Check Valve	25-2000	6,10, 16, 25, 35,40	BS EN 12334, BS EN 16767, MSS SP- 136, AWWA C508,	
Butterfly Valve	25-3000	6,10, 16, 25, 35,40	BS EN593, MSS SP-67, API 609	
Hydraulic Control Valve	25-600	6,10, 16, 25, 35,40	EN 1074-5, AWWA C530, EN1092-2, ASME B16.1,	
Flexible Rubber Joint	25-1200	6,10, 16, 25, 35,40	EN1092-2, ASME B16.1, ISO 7-1, ASME B1.20.1	-10-120
Water Flow Indicator	50-250	6,10, 16, 25, 35,40	ISO 6182, AWWA C606	0-120
Air Bleeding Valve	25-300	6,10, 16, 25, 35,40	EN1092-2, AWWA C512, ISO 7-1,	0-120
Strainer	8-1600	6,10, 16, 25, 35,40	EN1092-2, ASME B16.1, ISO 7-1, ASME B1.20.1	0-120
Bottom Valve	15-600	6,10, 16, 25, 35,40	BS EN 1563, EN 1092-2, ASME B16.42, ISO 7-1,	0-80
Balance Valve	15-600	6,10, 16, 25, 35,40	BS 7350, BS EN 1092-2, EN 558-1, BS EN 12266-1, BS EN 12266-2	-10°~120
Globe Valve	15-600	6,10, 16, 25, 35,40	BS EN 13789, BS 5152, BS EN 1092-2, BS EN 12266-1, BS EN 12266-2	-10° ~ 150
Hydrant Valve	50-300	6,10, 16, 25, 35,40	ASME B16.1, ASMT A536,65-45-12, BS 750, BS EN 1092-2, EN1092-2, GB3445, ISO 7-1,BS10 Table D/E Auto-frost Drain Valve as Standard, BS 750, AWWA C502, AWWA 503, EN 14339 EN14384	0-100

End of schedule

